

# STAR 360 Update

School Committee  
February 6, 2018



## What?

- Universal screening and progress monitoring
- Computer based testing K-5
- Adaptive

We usually have at least one green \_\_\_\_\_  
with dinner.

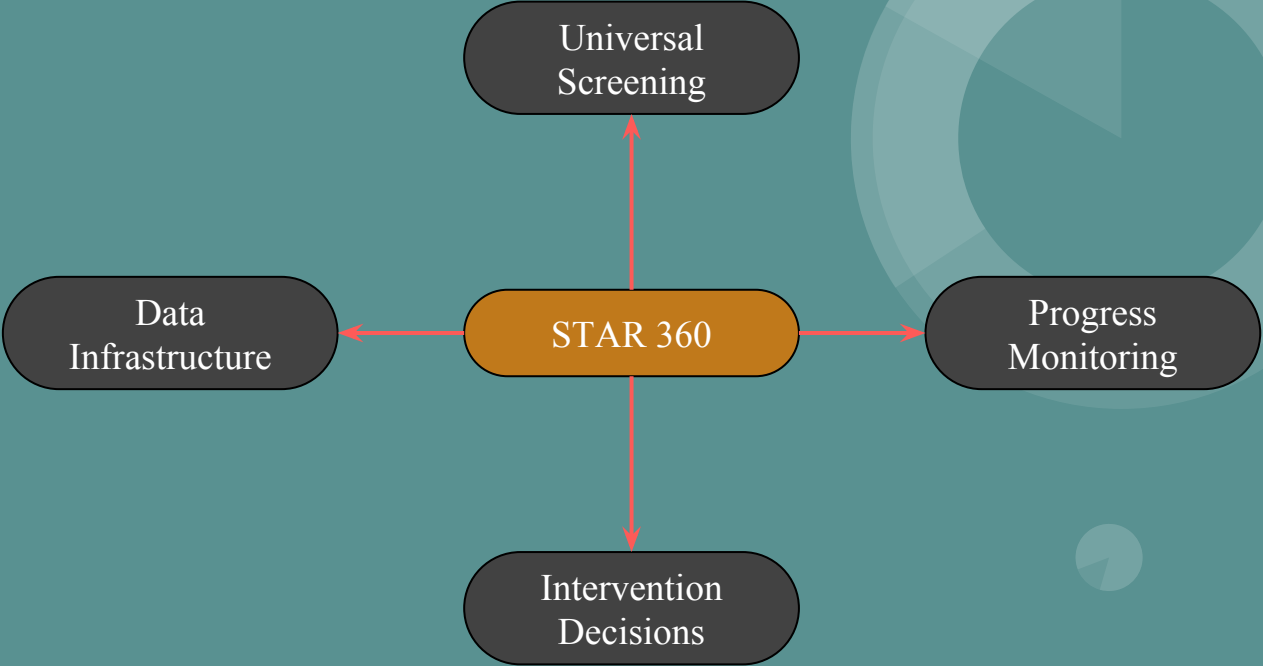
- 1 vegetable
- 2 leaf
- 3 meal
- 4 plant

## Why?

- Objective, reliable, and valid
- Efficient



# STAR 360 Early Literacy, Reading, and Mathematics Assessments





## Screening Report District Benchmark

1

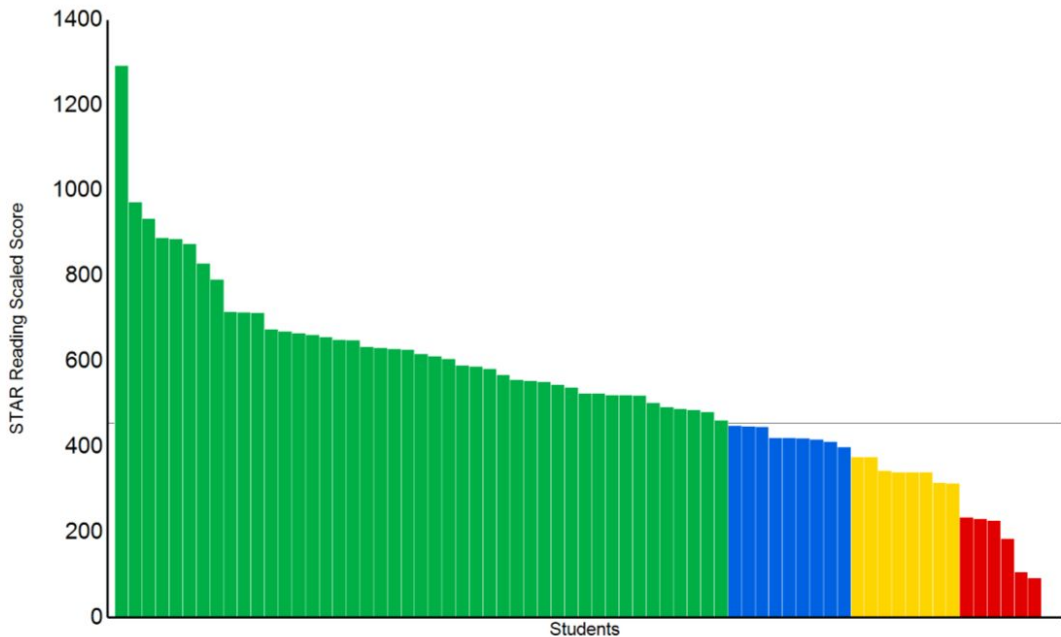
Printed Tuesday, February 6, 2018 6:15:41 PM

School: Avery School

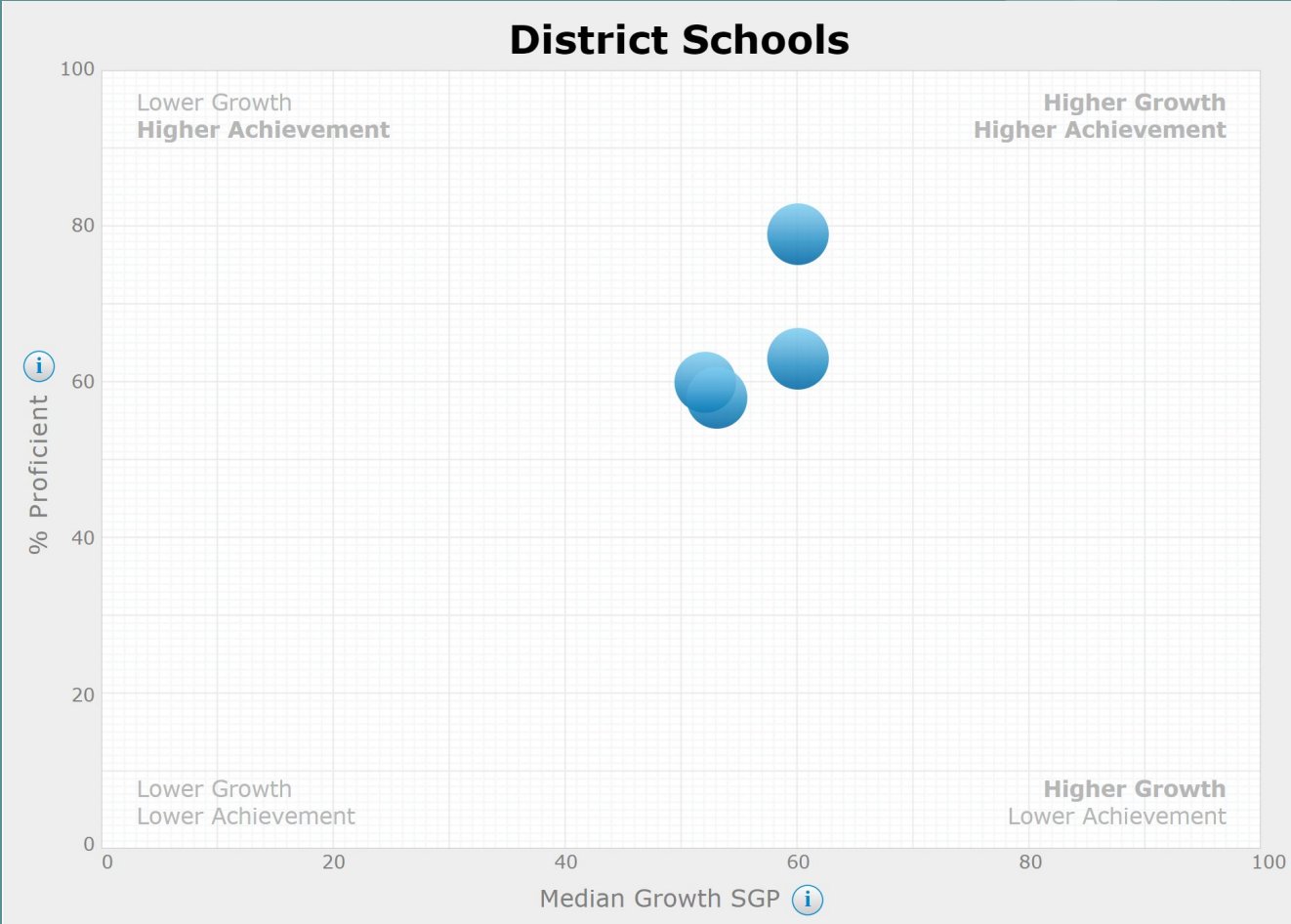
Reporting Period: 1/16/2018 - 1/31/2018  
(Winter)

### Report Options

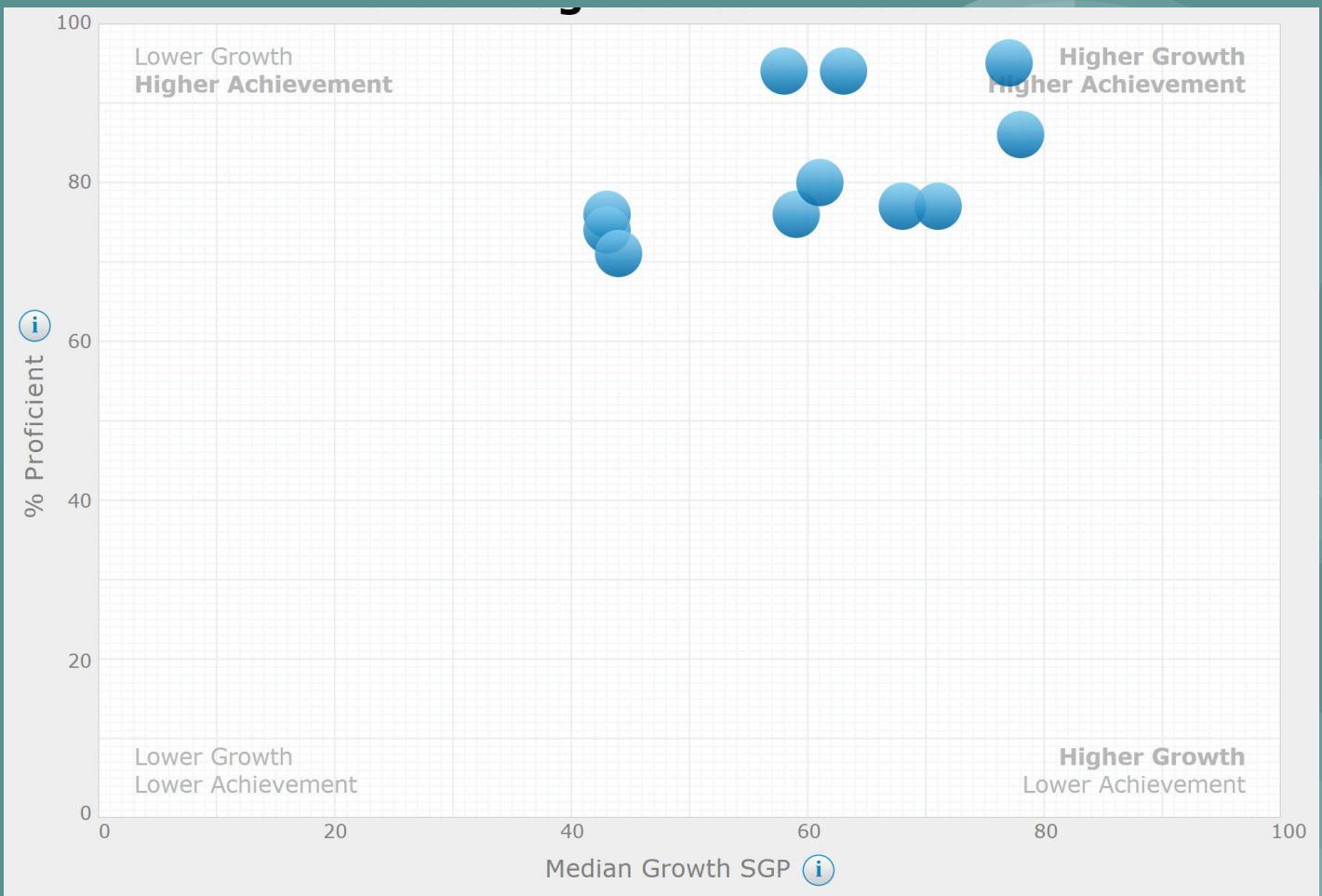
Reporting Parameter Group: All Demographics [Default]



# Student Growth Proficiency and Proficiency Levels

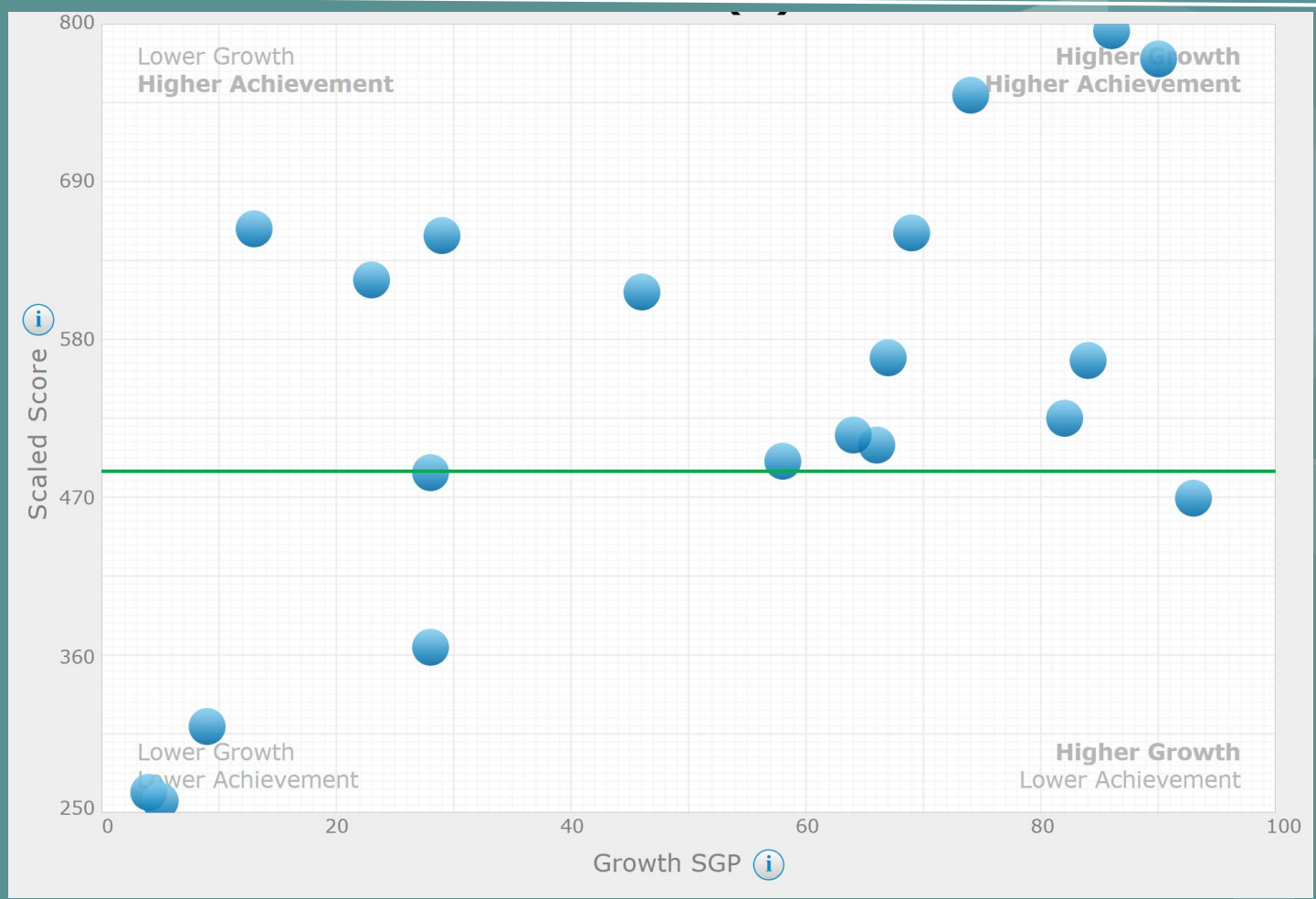


# Student Growth Proficiency and Proficiency Levels



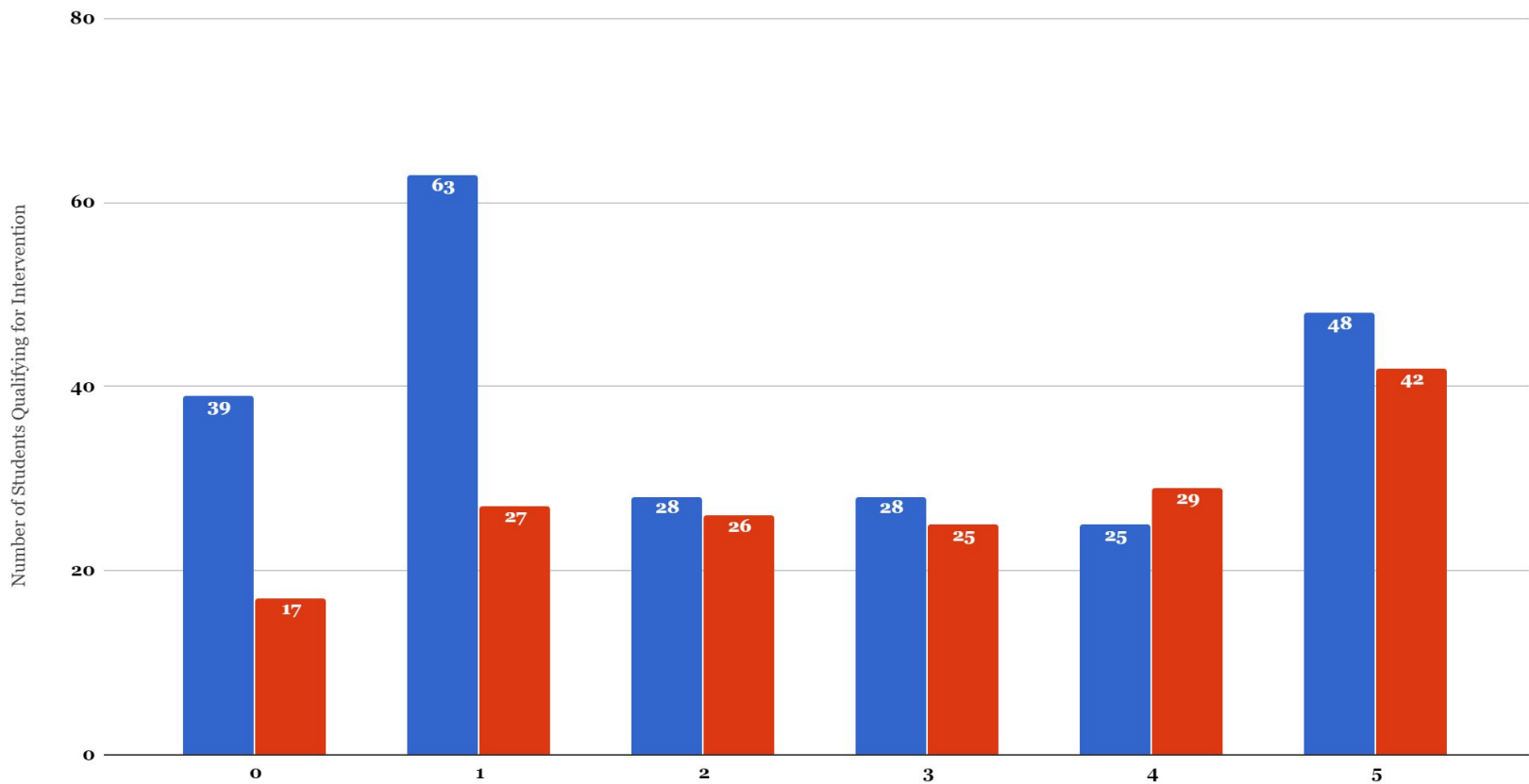


# Student Growth Proficiency and Proficiency Levels



# Students Qualifying for Intervention: Literacy

STAR 360: Fall to Winter Intervention Qualifications



STAR 360: Fall to Winter Intervention Qualifications

